

# Crowfoot Wrench Hook Spanner Type new available!!



Made in Japan

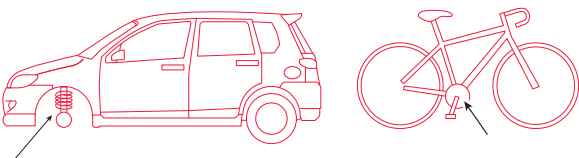
## Point 1 Extended use available!

- Handle allows for stronger tightening than a standard hook spanner.
- Perfect when avoiding obstacles and working in a narrow space by using spinner handle.

### For stuck grooved round nut!

Automobile Bicycle

- Car height adjustment
- Bicycle bottom bracket

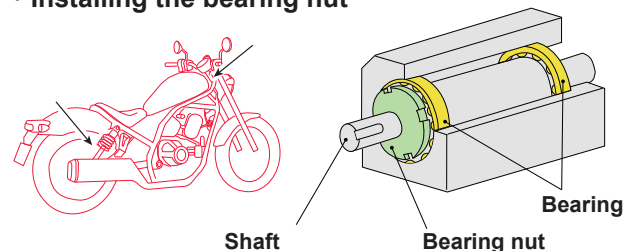


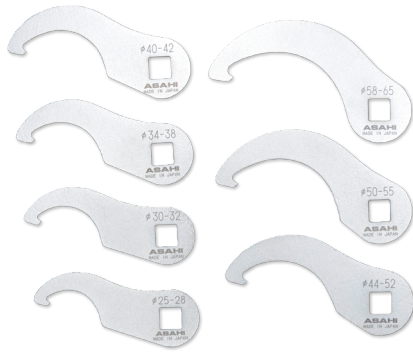
## Point 2 Easy torque management!

- All sizes have the same effective length for easy torque conversion.
- (※) The conversion formula is on the back.

### Prevent over-tightening of nuts

- To rotate shaft smoothly, it's important that the bearing is fixed by the proper torque.
- Bike suspension and adjustment of steering system.
- Installing the bearing nut

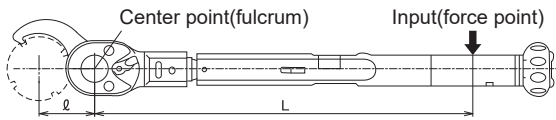




## VCK Crowfoot Wrench, Hook Spanner Type

Code	mm	C mm	T mm	H mm	L mm	effective length ℓ mm	Weight g	Price ¥
VCK3025	25~28	3	6	34	74	45	50	2,200
VCK3030	30~32	3	6	37	76	45	53	2,200
VCK3034	34~38	3.5	6	40	79	45	59	2,300
VCK3040	40~42	3.5	6	44	82	45	63	2,300
VCK3044	44~52	4	6	47	84	45	67	2,300
VCK3050	50~55	4.5	6	54	87	45	75	2,400
VCK3058	58~65	5	6	58	90	45	81	2,500

### 【For use with torque wrench】



Torque conversion formula :

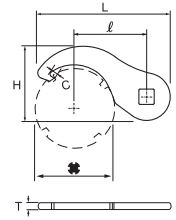
$$\frac{L}{(L + \ell)} \times \text{required torque value} = \text{input torque value}$$

EX)When using a torque wrench with an effective length of 190 mm and VCK3058 to tighten an object at 8 N·m.

L (Effective length of torque wrench) : 190mm  
 ℓ (Effective length of hook crowfoot wrench) : 45mm  
 Required torque value : 8N·m

$$\text{Torque conversion formula} : \frac{190}{(190+45)} \times 8 \approx 6.5$$

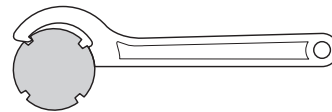
→When the torque wrench is set to 6.5N·m, the torque can be tightened with 8N·m



### □ Hook spanner is also available now!



### 【How to use】

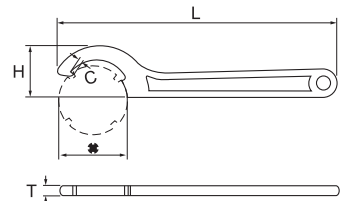


Hook into the groove of a round nut.

Code	mm	C mm	T mm	H mm	L mm	Weight g	Price ¥
FK0012	12~14	2	4	12	108	24	980
FK0016	16~20	2	4	12	108	24	980
FK0020	20~22	2	4	12	108	24	980
FK0025	25~28	2.3	5	21	136	48	980
FK0030	30~32	2.3	5	21	136	48	1,000
FK0034	34~38	2.5	6	28	160	88	1,100
FK0038	38~45	2.5	6	30	173	95	1,140
FK0040	40~42	2.5	6	30	173	102	1,140
FK0045	45~48	2.5	6.5	36	196	142	1,270
FK0045N	45~52	2.5	6.5	36	196	146	1,320
FK0052	50~55	2.5	6.5	41	208	156	1,540
FK0052N	52~58	2.5	6.5	41	208	158	1,630
FK0058	58~65	3	7.5	46	232	217	1,770
FK0065	65~70	3	7.5	46	232	217	1,820
FK0065N	65~75	3.5	8	52	247	262	2,020
FK0070	70~75	3.5	8	52	247	265	1,920
FK0075	75~80	3.5	8	52	247	253	2,000
FK0075N	75~85	3.5	8.5	62	271	378	2,390
FK0080	80~85	3.5	8.5	62	271	386	2,390
FK0085	85~92	3.5	8.5	62	271	370	2,590

Code	mm	C mm	T mm	H mm	L mm	Weight g	Price ¥
FK0092	92~100	4	8.5	68	286	404	2,680
FK0098	98~110	4	10	82	333	666	3,660
FK0105	105~115	4	10	82	333	665	3,570
FK0120	120~130	4.5	10	82	333	644	3,890
FK0140	140~150	5.5	10.5	100	385	940	6,300
FK0155	155~165	5.5	10.5	100	385	930	6,900
FK0175	175~195	6.5	12	130	466	1,730	13,500
FK0200	200~220	7.5	12	130	466	1,750	14,900
FK0230	230~250	8.5	16	162	567	3,400	19,300
FK0260	260~280	8.5	16	162	567	3,400	19,800
FK0290	290~320	12	16	196	610	-	-
FK0320	320~345	12	16	215	640	-	-
FK0350	350~375	12	16	235	680	-	-
FK0380	380~400	14	19	255	741	-	-

- Cathodic Electrodeposition
- Special Order (0290 ~ )



Made In Japan

**ASAHI TOOLS** Asahi Metal Industry Co.,Ltd.

Export dept.

9F, Toua Bldg., 4-5-7, Minamihommachi, Chuo-ku Osaka-shi, Osaka, 541-0054, Japan

Mail : export@asahi-tool.co.jp

